

GWTake 1.2

User Guide

February 3, 2010



www.tdp.cz

1 What is GWTake 1.2?

GWTake 1.0 is a tool that allows browsing through documents stored within the GroupWise system using the Windows Explorer. In this way you can work with documents in the same manner as if they were stored in a folder on your hard disk. You can open them from non-integrated applications or upload them to portals using your Internet browser, etc.

2 System Requirements

Windows 2000/XP
GroupWise client 6.5 - 8.1

3 Installation and Launching

You can launch the installation process using the file `gwtake_install.exe` in the installation folder `GWTake_install`.

Before launching the installation, you can modify the configuration file `gwtake.cfg` (see the Configuration section) in the required manner (or remove it) in the “resources” subfolder. You can put the configuration file back into the GWTake installation point later, or you can modify the file directly in the installation point.

GWTake is installed into a place specified in the file `gwtakeinst.inf` after the `instdir` parameter (for example: `instdir=C:\GWTake`). Unless the respective `.inf` file is stored in the location, from which you launch the installation, or if it has a different name, GWTake shall be installed into the default location, which is `\ProgramFiles\GWTake`.

Within the installation process, GWTake and the auxiliary application NetDrive shall be installed, set and, if the configuration file `gwtake.cfg` and the license file `gwtake.key` are located in the “resources” folder, they shall be copied into the folder, from which GWTake shall be started.

Please note! The license file named `gwtake.key` must be located in the folder, from which GWTake shall be launched. Otherwise, an error notice shall appear upon your attempt to launch it: “An invalid or missing license.”

After the installation is complete, you need to restart your station to apply your settings. You can set an automatic restart by removing the `noreboot=true` line from the file `gwtakeinst.inf`. After the restart of the station, both GWTake and NetDrive shall be launched automatically.

Please note! If the file `gwtakeinst.inf` is not in the installation point or if it is saved with a different name, your station shall restart automatically after the installation is completed!

You can launch GWTake also manually (for example, if the application is closed by mistake) from the menus of **Start\Programs\GWTake** (in this way, you can also launch the GWInfo utility). A book icon in the notification area of Windows (System tray) indicates a running application. You can close the application by right-clicking on the book icon in the notification area and selecting the “Close” option from the menu.

The NetDrive application creates a network drive automatically from GroupWise libraries made accessible by GWTake (U:\ set as default), through which users can access documents immediately (unless they are logged in the GroupWise, they shall be required to enter their password).

Before the installation is launched, the NetDrive location can be set by modifying the **szDir** parameter in the **setup.iss** file. The file is located in the **resources\NetDrive** subfolder. In the same way, you have to change the path in the **NetDriveRun.reg** file. In both cases, the default value is **C:\ProgramFiles\NetDrive**.

If you need to change the first letter for your NetDrive network drive, files named **NetDriveCon.reg** a **NetDriveNet.reg** must be modified before the installation is launched in the following manner:

NetDriveCon.reg - in the line "DriveName"="U:" replace “U” with another letter
NetDriveNet.reg - in the line [HKEY_CURRENT_USER\Network\U] replace “U” with another letter

You must use the same letter in both files!

*Notice: If you have not obtained the NetDrive license yet (delivered with Novell NetWare 6 Client CD), skip its installation and install only GWTake by launching the **gwtakeonly.exe** file.*

4 Configuration

In the configuration file **GWTake.cfg** you can set the interface language version, determine the list of GroupWise files, which GWTake shall display on the first (root) level of the folder structure, and select a character or string to replace spaces in document names.

The configuration file is divided into several sections. If the value 'Language=English' is set in the [GWTake] section, the interface shall be displayed in English. If anything else is set or if the key is missing, the interface shall be displayed in Czech. If it is necessary for any reason to prevent displayed GroupWise documents from containing spaces in their names, the Space Replacement shall be used to replace spaces in document names with selected characters or strings (for example: **Space Replacement = %20**). This parameter can be set globally in the [GWTake] section and/or specifically for each user. User

parameter is set as preferred.

Files listed in the configuration file shall be displayed only. If there are no files specified in the configuration file or if the configuration file is missing completely (or if it is saved in a location other than the folder, from which the application is launched), all files shall be displayed.

Files to be displayed by GWTake are defined in the [Allusers] section applying to all users and, in addition, in sections applying to specific users. Those sections are differentiated by specified names of user objects in eDirectory (FDN - full Distinguished Name), for example: [jdoe.sales.tdp].

For users using GroupWise in the “Remote Access” mode, AccountUID is used in the section name, for example: [jdoe@tdp.cz:1129740234].

Files are identified using FolderIDs or names.

Please note! FolderIDs may differ in Online and Remote modes! Names must be entered precisely (case-sensitive)!

Configuration file example:

```
[GWTake]
;The 'English' value shall set the interface in English
Language = English
;Character/String replacing spaces in file names
Space Replacement = _
```

```
[All Users]
;Organizer
Folder1 = C.TDP Na slupi.TDP.100.0.1.0.1
;Organizer-remote
Folder2 = C.TDP Na slupi.TDP Office.100.0.1.0.1
```

```
[jdoe.sales.tdp]
Space Replacement = %20
;Mailbox
Folder1 = 7.TDP Na slupi.TDP.100.0.1.0.1
;Documents
Folder7 = 10.TDP Na slupi.TDP.100.0.1.0.1
;Check List
Folder8 = 1A.TDP Na slupi.TDP.100.0.1.0.1
```

```
;user-remote
[psmith@tdp.cz:1129740234]
```

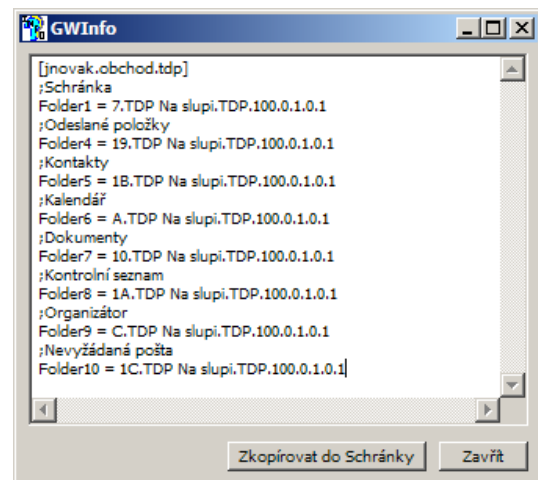
```

;Documents
Folder1 = 10.TDP Na slupi.TDP Office.100.0.1.0.1
;Agreements
Folder2 = 3EC36DD6.TDP Na slupi.TDP office.100.1242424.1.2C18.1

```

To acquire data needed to create the configuration file (i.e. FolderID, eDirectory Distinguished name or AccountUID), you can use the `GWInfo.exe` utility, which (after it is launched) lists information related to the user currently logged in to Group Wise (if the user is not logged in, their password shall be required).

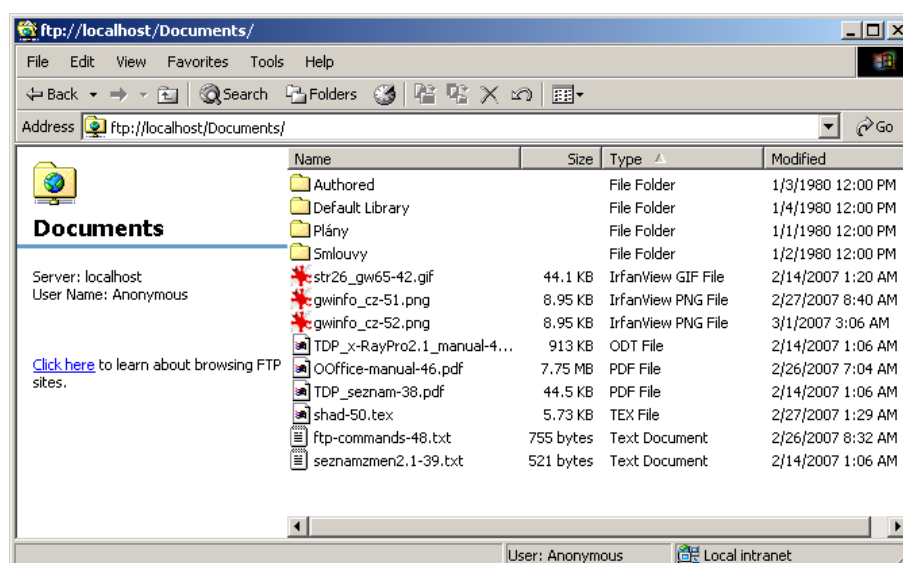
Notice: Please note! To activate changes made in the configuration file, you need to close and restart the GWTake application!



The configuration file must be located in the folder, from which the application is launched. Otherwise, the setting shall not be activated.

5 Controls

If the NetDrive application is used, the content of libraries is made accessible after the installation as a network drive designated as `NetDrive:GWTake(U:)` in the default setting, which can be browsed through in a normal way and from which you can open any documents directly or from applications.

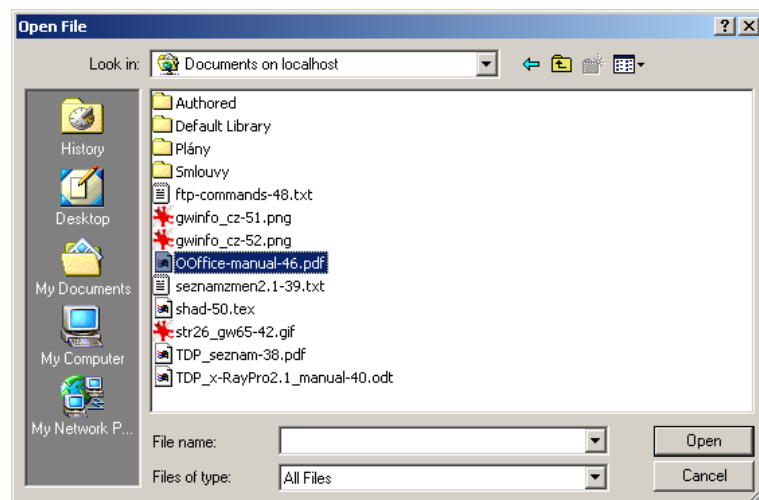


If the NetDrive application is NOT used, you can use the link `GroupWise Library.lnk*` (attached in the “resources” folder in the installation folder) to open a new Windows Explorer window and browse through folders and documents saved in the GroupWise system like you would browse through the folder structure of your hard disk.

In either case, a password shall be required before libraries are displayed in either case, unless the GroupWise client (or Notice Administrator) is open.

In the Window, folders and documents are displayed as they are structured in the GroupWise system. Automatically added numbers after the file names indicate numbers of documents in the GroupWise system, allowing the existence of more files with the same name on the same level, which would not be possible in the Explorer normally. Thanks to GWTake, documents located in GroupWise libraries can be opened also directly from applications, including documents, which are not integrated with GroupWise:

In the “Open” dialogue of the respective application, click on This computer and the respective network drive (U:), folder and file.



Without NetDrive, select `NetworkNeighborhood>localhost`, and then the required file from the respective library.

Please note! In non-integrated applications, documents are opened only for reading purposes. Unless the application, in which the document is opened, is integrated with GroupWise, it is not possible to save the document back into the library after making any changes!

The application itself is controlled through a menu, which shall be displayed after right-clicking on the book icon in the System tray:

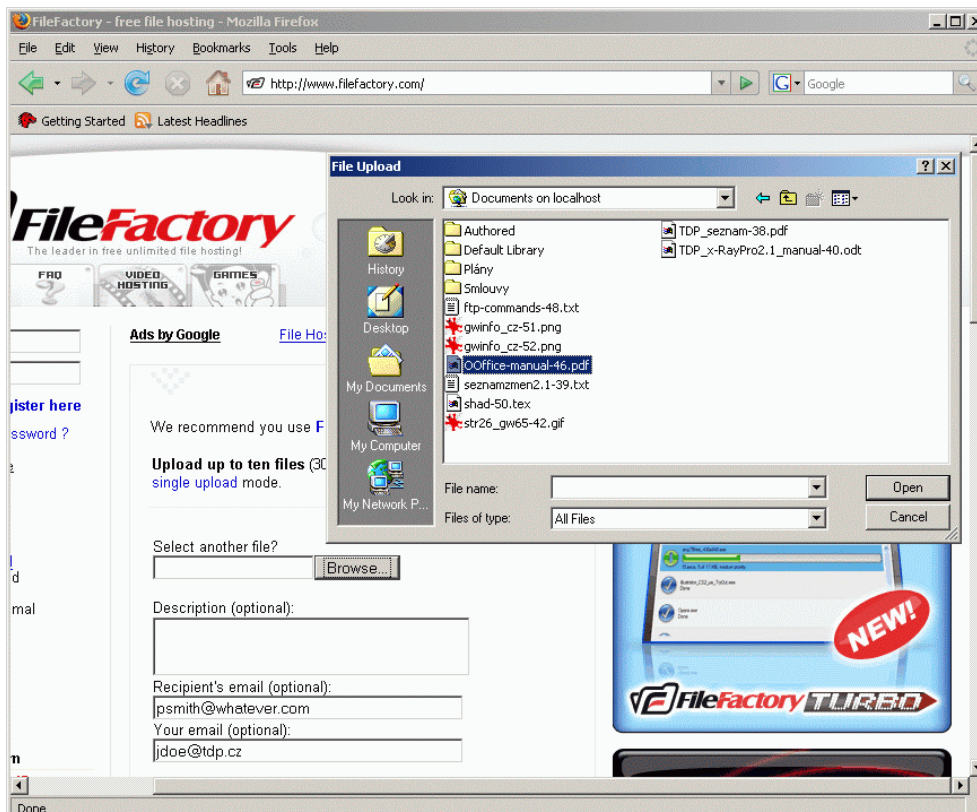
- Stop** - Stops the application; you can browse through and open any shown documents and folders but you cannot go to documents and folders that have not been explored yet
- Go** - Launches the stopped application
- Exit** - Ends the application
- GW error log...** - Displays a window, in which the last 25 potential errors appear that occurred during the work of GWTake with GroupWise. The time, the FTP server operation, the error code and error notice shall be listed.

Notice: To activate changes made in the GroupWise client (such as adding a document), you need to reload the library content in the Explorer window using the F5 key.

*) The **GroupWise Library.lnk** file is a shortcut to the location of **ftp://localhost/**. It can be located anywhere desktop may be a convenient place.

Example of use Uploading a document to the FileFactory.com portal

The GWTake application also allows uploading a document from the GroupWise system to the server directly by selecting the document in the browser dialogue "File upload". Just select **NetworkNeighborhood>localhost** and the required file from the respective library (or folder).



6 Technology Used

GWTake uses GroupWise Object API. It enters GroupWise as a user through an installed client. The content of folders is filtered objects of the “document” type are shown only. To make the work easier, you can prevent displaying irrelevant folders (such as Junk Mail, etc.).

Uploaded information is displayed using a built-in ftp server. This secures required features, such as the possibility to open documents directly from applications, including those, which are tailor-made for specific users (or which users create themselves). To guarantee high security of data, the ftp server can be accessed only at the localhost address, which makes it impossible to connect to it from any other workstation.